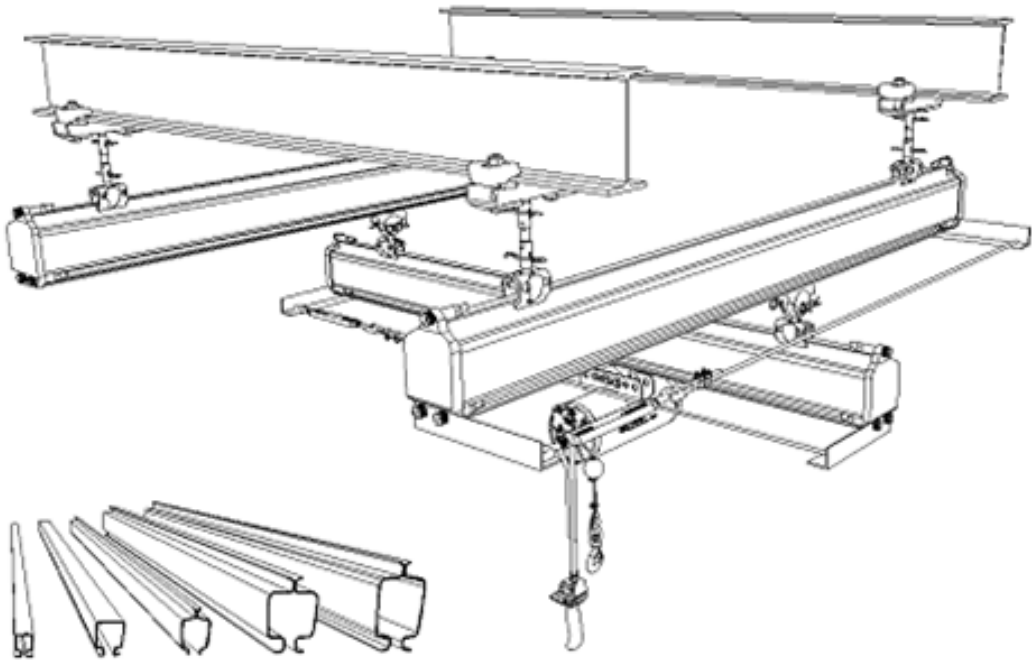


KH Track System

Assembly and Installation Manual

※ Safe and efficient operation depend on clear understanding of Manual before installation.



(주) 고려호이스트
KOREAHOIST CO.,LTD

Tel.: (82) 31-431-6030 Fax : (82) 31-499-3630

<http://www.koreahoist.co.kr>

e-mail : koreahoist@koreahoist.co.kr khc@koreahoist.co.kr

KH Track System

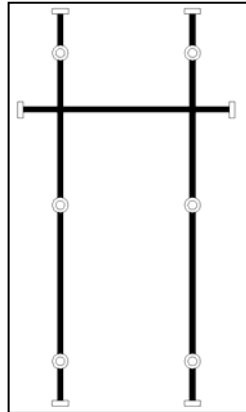
Assembly and Installation Manual

- CONTENTS -

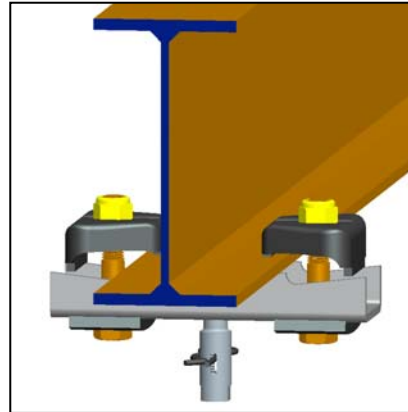
1.	Preparation	P1
2.	Assembly	P1
3.	Installation	P4
4.	Others	P5

1. Preparation

- 1) Prepare necessary **TOOLS**.
- 2) Check all components in accordance documents.
- 3) Check whether **FIXING POINT** of **Upper Suspension Bracket** at Tapered surface of **H-beam** is available or not as shown (**◎ marked position**) of <Fig.1> and <Fig.5>.



<Fig.1>



<Fig.2>

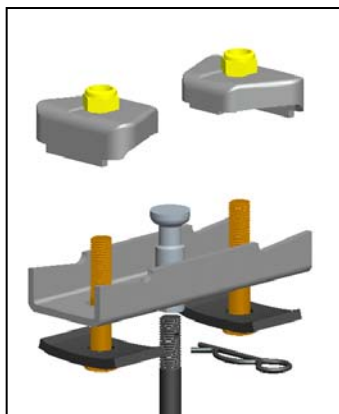
Mount and fix **Upper Suspension Clamp** at **H-beam** surface as <Fig.2>.

(**◎ marked position** of <Fig.1> and <Fig.5> is mounting and fixing points of **Upper Suspension Clamp**)

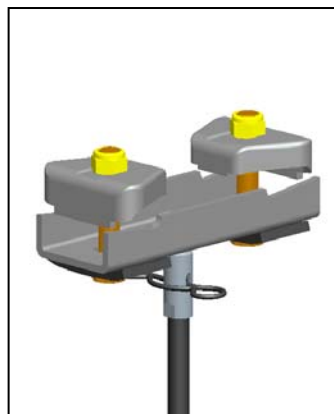
※ To provide any of other **Alternative components** supposing **Fixing point** is not available at **◎ marked area**.

2. Assembly

- 1) Pre assembly of **Upper Suspension Bracket Assembly** depend on mounting position and necessary quantity.



<Fig.3>



<Fig.4>

* Tools

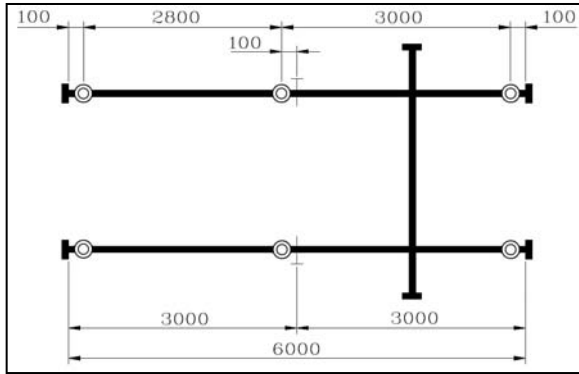
KH-100, I = M10 Nut (17 mm)

KH-II.L/ II = M16 Nut(24 mm)

* Note

Pre-Tighten of Lock Nut for Upper Suspension Bracket Until to fit roughly at H-Beam Fixing point.

2) Mount Track Suspension Clamp at Track.



<Fig.5>

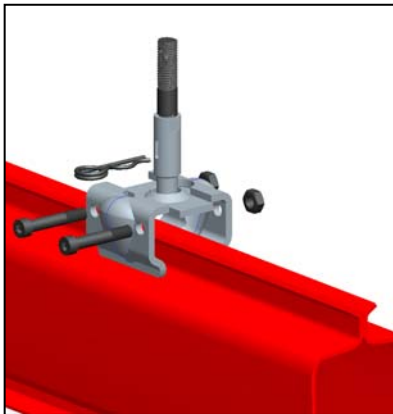
*** Tools**

KH 100,I = M6 Nut (10 mm)

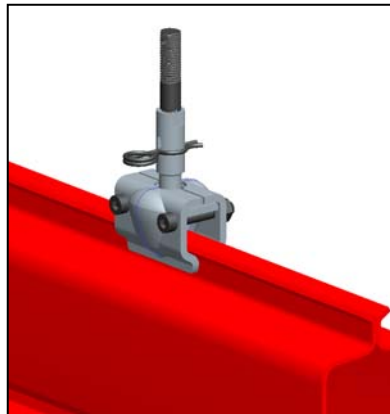
KH II.L/II = M8 Nut (13 mm)

*** Note**

Pre-mount of Track Suspension Clamp at Track by means of tightening the Bolt of Track Suspension Clamp only able to move it's location..



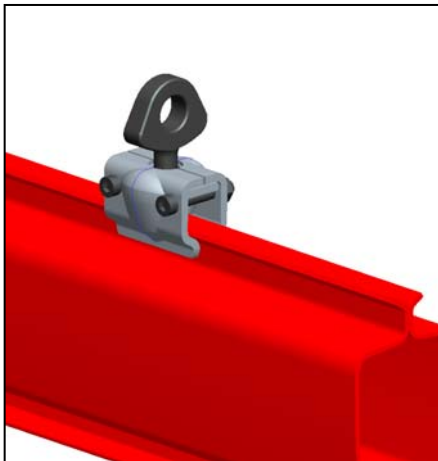
<Fig 6>



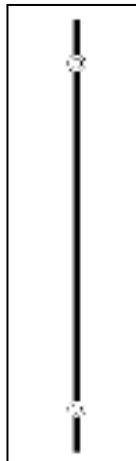
<Fig.7>

Check installation location of **Track** and mount **Track Suspension Clamp** At © **marked position** as shown at <Fig.5>.

3) Assembly **Crane Suspension eye** at **Girder Track**.



<Fig.8>



<Fig.9>

*** Note**

Pitch of **Track Suspension Eye** Depend on length of **Traveling Track**.

*** Tools**

KH 100, I = M6 Nut (10 mm)

KH II.L/II = M8 Nut (13 mm)

Common tools = Spanner M6,
- Driver, Wrench M10.

*** Note**

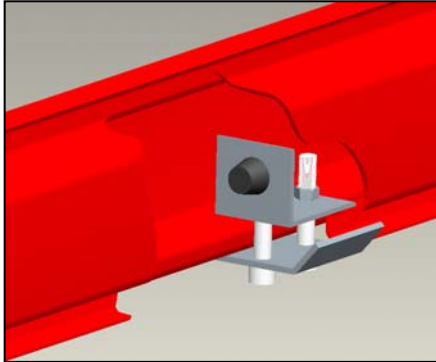
Pre-Tight able to move **Track Suspension Eye** to fit assembly **Location**.

*** Assembly Track Suspension Eye** at upper part of **Girder Track** to fit **Traveling Track** width.

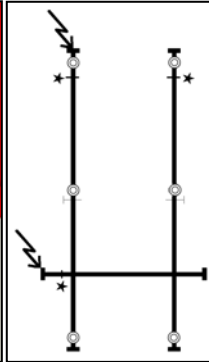
4) Mount of **Internal Buffer Stop** : Refer to the *** mark** of below <Fig.11>

Mounting locations of **Internal Buffer Stop** are 3 locations as shown at ***marks** of <Fig. 11>. Actual mounting location show at Installation DRAWING.

KH 100, I = 32 mm KH II.L/II=50 mm



<Fig.10>

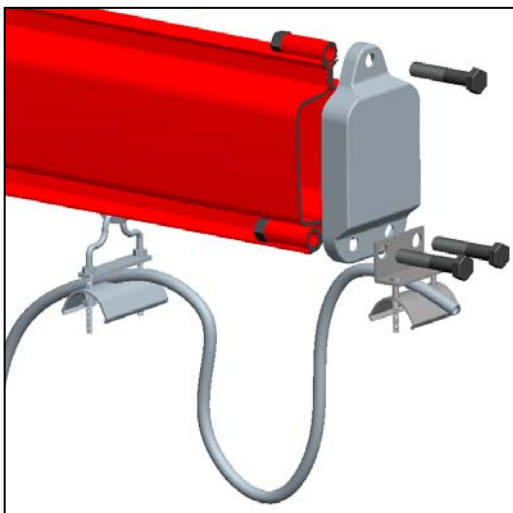


<Fig.11>

*** Tools**

- Electric Drill
- Drill Bit $\varnothing 3\sim\varnothing 4$ (for lower Hole)
- Drill Bit $\varnothing 7$ (KH-100)
- Drill Bit $\varnothing 10$ (KH-I, II-L, II)
- Spanner M6 (10 mm) (KH-100)
- Spanner M8 (13mm) (KH-II-L, II)

5) Assembly of **End cap with Buffer**



<Fig.12>

Mount **Cable Clamp** and or **Cable Trolley** At **Track end** together with **End Cap with Buffer** as <Fig.12>.

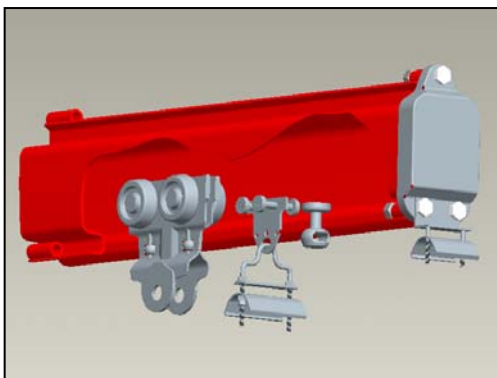
*** Tools**

- KH-100 = Spanner M6
- KH- I = Spanner M8
- KH-II.L/II= Spanner M10

*** Note**

In case of not so easy for tightening the NUT, **Adjustable Wrench** is easier to Tighten.

6) **Trolley and Cable Trolley**



<Fig.13>

Firstly insert **Trolley, Cable Trolley and Cable Clamp** at inside of Track as <Fig.13>.

*** Quantity of Cable Trolley is**

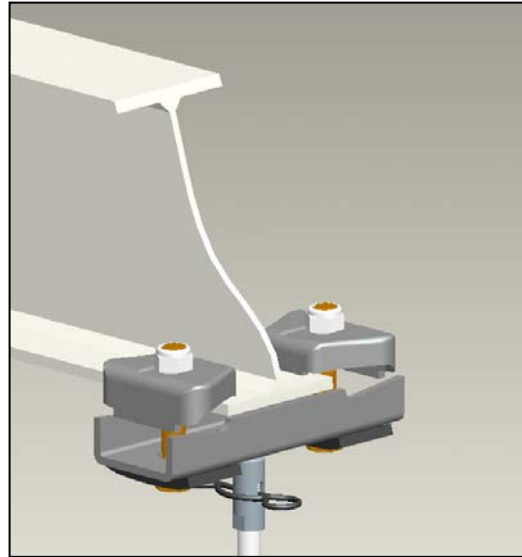
less ONE from Track length, for instance, in case of Track length of 3 meter, 2 sets of Cable Trolley is required.

3. Installation

1) Installation of Upper Suspension Bracket.

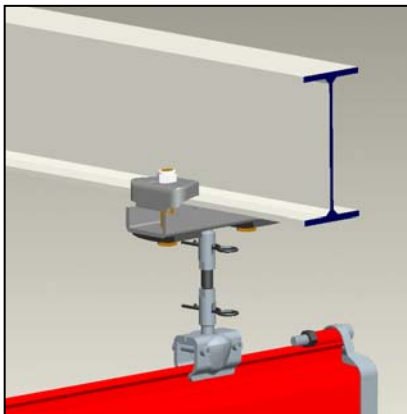
Firmly mount of Pre-assembled **Upper Suspension Bracket** at Existing H-Beam or Structure as per <Fig.14>

Check and make sure that Bracket Bolt should be firmly And correctly fitted at Flange Surface of H-Beam or Structure.

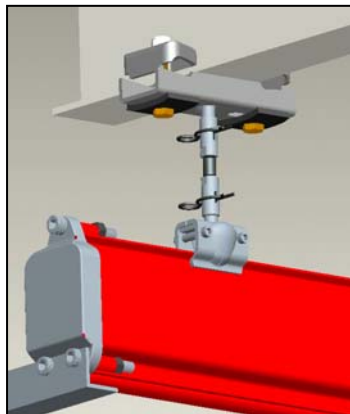


< Fig.14 >

2) Traveling Track



<Fig.15>



<Fig.16>

**** CAUTION !!**

Insert Spring Clip firmly at Hole at Suspension Rod after assembly of Suspension Rod at Ball Head Suspension Rod.

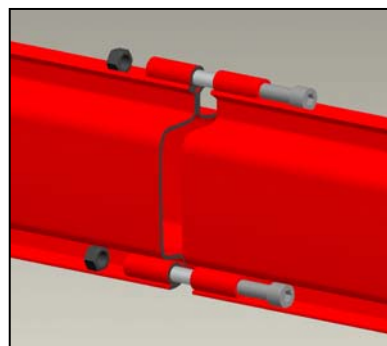
Spring Clip prevent to loose of Suspension Rod.

*** Joint of Track as shown as**

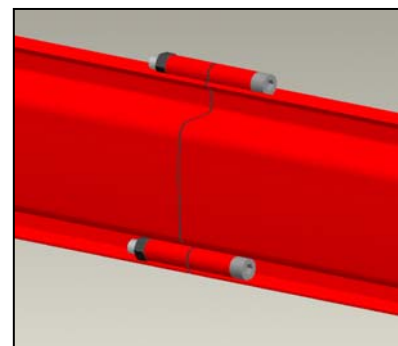
< Fig - 17 and 18 > with Bolt and Nut by means of **L-Wrench**. Prior to tighten Bolt and Nut, to check the **Alignment of Track and whether Trolley run smoothly or not.**

Track Alignment by TOOL or similar one Shown at page 06 of Tech. Manual.

**** Tighten of Upper Bolt first and Lower two Bolts.**



< Fig.17 >



< Fig.18 >

*** Wrench bolt size**

KH-I : M8-75 L

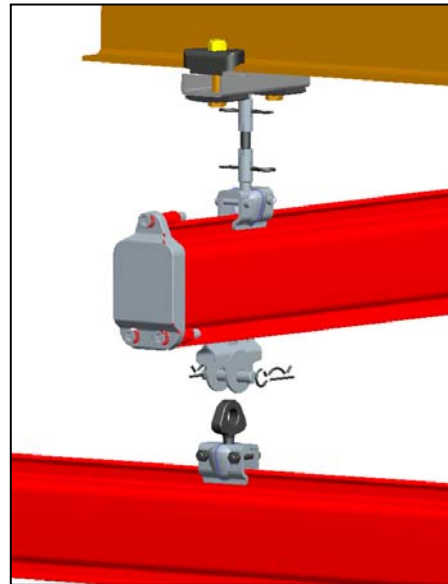
KH-II-L,II : M12-120 L

3) Assembly of **Girder Track**

Assemble **Girder Track at Traveling Track** as <Fig.19>.

Use **Genuine Trolley Pin** and **Spring Pin** provided at **Trolley**.

** Use of any other PIN cause any possible accident.



<Fig.19>

- 4) Check again all the Size of Track etc in order to cross check for proper using of specified components, such as Tightening Bolt, Spring Clip, etc.

4. Others

- 1) Followings tables are strictly recommended to read and understand properly prior to install for Safe and Proper installation and efficient operation of Air Hoist and Air Balancer and or Track system, as well.

Load (kg)	Model		Air Pressure (kg _f /cm ²)	Air consumption (N · m ³ /min)	Weight (kg)	Air Hose size (mm)
60	Air Balancer	KAB-070	7	0.1	23	I.D Ø8
100		KAB-100		0.2	42.5	
150		KAB-160		0.2	40	
220		KAB-230		0.3	55	
250	Air Hoist	KA1S-025	6	1.6	23	I.D Ø12
500		KA1S-050		1.6	23	
1,000		KA1S-100		1.6	33	
2,000		KA2S-200		1.8	45	

※ Each One set of F-R-L (Filter-Regulator-Lubricator) for Air Hoist and F-R (Filter-Regulator) for Air Balancer to be installed to prevent Trouble otherwise cause serious damage of Machine.

- 2) Tightening Torque for Bolt and Nuts for safe and Proper installation
And or operation is as follows.

M 6 : 1.1 kg_f. m
M 8 : 2.6 kg_f. m
M10 : 4.6 kg_f. m
M12 : 8.2 kg_f.m
M16 : 15.3 kg_f.m

- 3) Please contact our Technical Dept. for any other queries or services,
shown as below.

경기도 시흥시 정왕동 시화공단 3 바 630,
Phone : (82) 31-431-6030, Fax:(82)31-499-3630
<http://www.koreahoist.co.kr>
E-Mail:koreahoist@koreahoist.co.kr



All rights reserved.

Copy rights.

Printed in Korea 2005/05